



AGRICULTURAL RANGE **MLT-MVT**
Telehandlers



Handling your world

Founded over 60 years ago by the Braud family, the Manitou Group now operates worldwide. A world-leader in all-terrain material handling, the Group designs, manufactures, distributes and services equipment for construction, agriculture and industries.

The Group's product ranges include: all-terrain telescopic fixed, rotating and heavy-load telehandlers; all-terrain, semi-industrial and industrial masted forklift trucks, articulated loaders, compact skid-steer loaders on wheels or tracks, access platforms, truck-mounted forklifts, warehousing equipment and attachments.

Through its iconic brands, Manitou, Gehl and Mustang, and its worldwide network of 1,400 dealers, the Group offers the best solutions to create optimum value for its customers.

With headquarters in France, the Group registered a revenue in 2015 of 1,287 billion euros in 140 countries and employs 3,214 people who are all strongly focused on satisfying customers.



1958

Marcel Braud conceives the idea of the Manitou truck.

1972

Group enters foreign markets.
Sales partnership agreement signed with Toyota for exclusive distribution of Toyota industrial forklift trucks in France.

1981

Launch of first Manitou telehandler.

1984

Manitou floated on stock exchange.

1993

First MRT rotating telehandlers are sold.

1995

Launch of first range of access platforms.

1996

1st ISO 9001 certification obtained.

1998

Marcel Braud becomes Chairman of the Supervisory Board.

2006

Manitou passes the 1 billion euros sales milestone.

3 brands
distributed
by 1,400 dealers
in 140 countries

MANITOU | **GEHL** | **MUSTANG**

- 21 subsidiaries
- 9 production facilities
- 3,214 employees worldwide
- 65 % of the share capital held by the founding families
- 78 % of revenue comes from foreign markets
- Revenue of 1,287 billion euros in 2015

2007

Manitou opens an international logistics center spanning 22,000 m².

2008

Takeover of the American company Gehl.

2009

Change of governance – back to a Board of Directors.

2010

Launch of Gehl and Mustang articulated loaders.

2011

Review of family shareholder structure.

2012

Crossover agreement signed with Yanmar for the manufacture and distribution of mini-excavators.

2013

Consolidation of Yanmar partnership as Yanmar becomes a Group shareholder, with 6.26 % of the capital

2014

January: Michel Denis appointed President and CEO.
April: new roadmap drawn up focusing on the three divisions, including one for services.

2015

Manitou celebrates the sale of its 500,000th machine worldwide.







Discover the agricultural telehandlers by Manitou

A large range which combines performance, comfort and simplicity in order to meet all your needs.

SUMMARY

Advantages of the telehandlers by Manitou	06
Manitou attachments	12
The model that's right for you!	14
MLT 625	16
MLT 629	18
MVT 730-929	20
MLT 634-735-741-732	22
MLT 840-1040	24
MLT 845	26
MLT 960	28
Technical information	30
Options and levels of finishing	36
Manitou service	38
REDUCE approach	42

Exceptional performances



5.5 to 10 m
lifting height

Capacities of
2.5 to 6 t



Working outreach
up to
6.55 m



Large working area:

You are able to handle any load in a wide work area and easily manoeuvre around obstacles, resulting in increased productivity.

Whatever type of agricultural task you carry out, the MLT-MVT will meet your expectations!

Increase in
PRODUCTIVITY
guaranteed!



Power adapted consumption controlled

The engine of the MLT and MVT is specifically adapted to give you maximum power and efficiency whilst optimising your fuel consumption.

**ENGINE
and GEARBOX
adapted to your
needs**

Our machines have a variety of gears and gearboxes to suit all needs:

- the torque converter can be fitted with:

Mechanical gearbox	Powershift	Automatic M-Shift®
4 gears	6 gears	5 gears

- hydrostatic transmission with low or high gears
- varioshift (changing continuous speed without interrupting torque)
- to continuous variation (CVT)

You will find the machine made for you within the Manitou agricultural range!



All-terrain handling

Manitou telehandlers are designed to adapt perfectly to your environment, both inside and outside and to your needs:

- agricultural, industrial or profile tyres environment
- high ground clearance
- optimal turning radius
- excellent pulling force
- versatility offered as the boom can extend to different heights



An ULTRA-MANAGEABLE MACHINE with 4 steering modes

4 drive wheels 2 steering wheels	4 drive wheels 4 steering wheels	4 drive wheels crab mode	4 drive wheels mani-crab mode
For road use	For handling on your farm	For tight spaces	For tasks such as silage...

Comfort, ergonomics and security

Greater comfort and better ergonomics means you'll be less tired and more effective

- optimal accessibility
- spacious and ergonomic cabin
- mechanical, pneumatic cloth seat
- visibility of 360°
- height and depth adjustable steering column
- numerous storage
- mono lever JSM® (Joystick Switch and Move)...

A cabin designed to protect you

With a large glass surface (roof and front wind shield) as well as a high seating position, the MLT-MVT gives you 360° visibility, therefore not only guaranteeing your safety but that of those around you. The cabin meets your ROPS/FOPS* requirements and will keep you safe in the event of the passenger compartment being deformed.


*ROPS: Roll-over protective structures / FOPS: Falling-object protective structures



Manitou works hard to make your work easier!

With the JSM® you can use all the hydraulic functions with just one hand: which means you keep one hand on the wheel at all times for maximum safety.

- 1 FNR (Front Neutral Reverse) switch
- 2 Hydraulic attachment line
- 3 Telescope: retraction and extension
- 4 Buttons + and - : change speed

- 
 Forward: boom lowers
 Backward: boom lifts
 Left: crowd
 Right: dump



Check out our cabins with a virtual tour at 360.manitou.com

Machines that are easy to use and maintain

- Easy maintenance thanks to the accessible engine and the positioning of parts that need regular upkeep
- Easy and secure access to different tanks
- Reversible fan: maintenance of the radiator is easier to out
- Centralised grease points:
 - compensation cylinder (1 grease point at the base of the cylinder)
 - lift cylinder (1 grease point at the base of the cylinder)
 - rear drivetrain axle (2 greasing points)
- Maintenance reminders in the cabin



Robustness and reliability for handling with complete safety

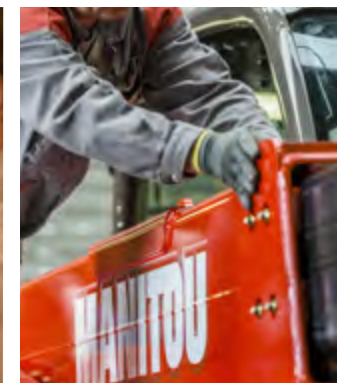
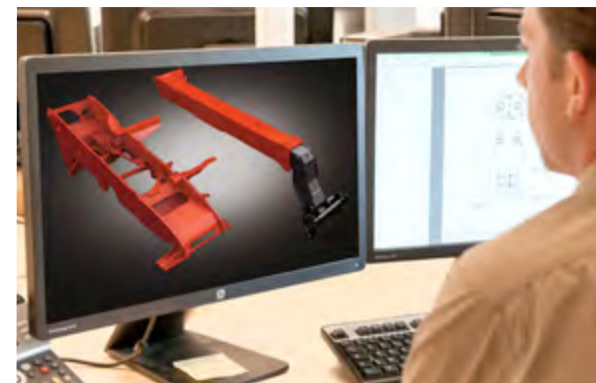
Real know-how to ensure quality and safety.

Our design offices, consisting of more than 200 engineers and technicians, are specialized in the design of your agricultural telehandlers for more than 30 years.

With more than 50 patents filed, our expertise in chassis and boom construction ensures the reliability, robustness and longevity of your equipment.

Our skills are numerous and correspond perfectly to your needs: manufacture of forklifts, patent registration, qualification of the components, extensive test prior to delivery...

We take into consideration the agricultural cycle of use of your machines from their development: the pneumatics, the gears or even the cooling mode have been chosen carefully and assembled. You will therefore use one dedicated machine for 100% of your agricultural tasks.



RANGE
MLT-MVT
For bulk loading and unloading
handing feed, silage,
animal feed,
transport and many
other uses...



Versatility

Manitou telehandlers are truly adaptable tool carriers, as the specially designed attachments can easily be added depending on your needs. We have a range of Manitou-approved attachments that are perfectly compatible with the MLT range so that our machines do everything you need.



The Manitou attachments

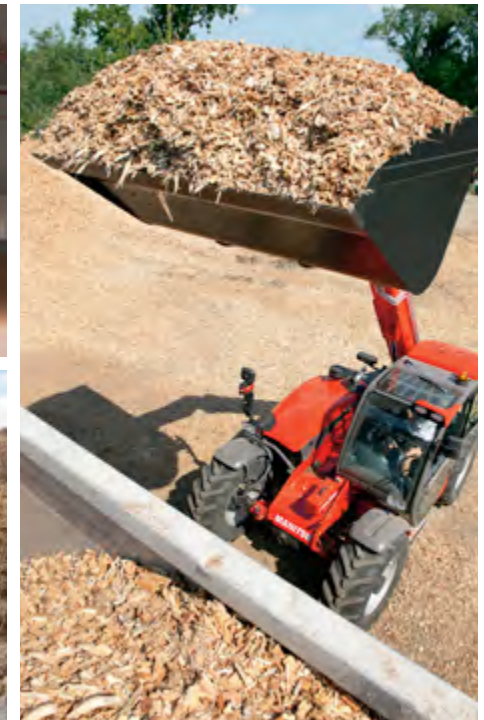
More than 100 different types of attachment

Choose the attachments that are right for you from more than 100 references in the Manitou range.

A simple and fast coupling system

In order to save you time, the coupling system for Manitou attachments (TS: Tablier Simple / SA: Simple Apron (EN) with manual or hydraulic locking), is universal, quick and easy to use.

You can attach and detach your attachments with ease.





CBG Grapple Bucket

Versatile grapple bucket allowing for gripping and holding of farming materials (manure, silage, grains, etc.).



CRS Silage Facer Bucket

Allows silage to be unloaded onto the pile. Leaves a clean pit face and reduces fermentation.



BSB Sugar Beet Bucket

Designed for handling sugar beet and other roots/tubers, filtering out soil and other impurities.



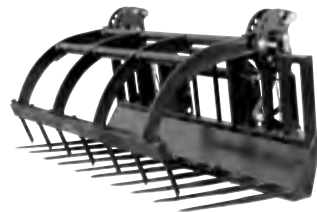
PBE Bale Clamp

With its articulated arms the clamp can adapt to bales of up to 1,000 kg without damaging them.



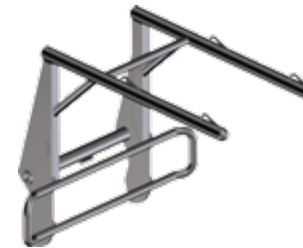
FB Square Bale Fork

A simple, high-performance tool for handling round and square bales.



FFGR Manure Fork with Grapple

Versatile fork for manure, bales... Open the adjustable grapple for improved versatility.



HBB Big Bag Handler

Handles up to four big bags safely for increased efficiency when loading and unloading.



MLT-MVT

A wide range
for all your
agricultural uses





The model that's right for you!

Choose from a wide range of Manitou agricultural telehandlers with lifting capacities from 2.5 to 6 tons and lifting heights of 5.5 to 10 meters. With the super compact MLT with high capacities, you will choose the machine JIB that suits you as well as the options and the level of finish that is adapted to your needs.

Compact:

MLT 625, MLT 629, MVT 730, MVT 929



Versatile:

MLT 634, MLT 735, MLT 741, MLT 732



Versatile:

MLT 840, MLT 1040



High capacity:

MLT 845, MLT 960



MLT 625



Super compact and all-terrain

You will have access to the most remote corners of your farm. At less than 2 m high and 1m 81 wide, the MLT 625 can get into any corner.

Besides its ground clearance of 38 cm, the MLT 625 is fitted with 18" standard agricultural profile pneumatic tyres. The tyre tread pattern is designed for all agricultural activities.

The wide tyres are also available as an option (less pressure on the earth).



Large tyres optional	Alliance 400/55-17.5 A 328		BKT 15-55-17 AS504	
Tyre width	39.3 cm		38.0 cm	
Overall diameter tyres	90.2 cm		89.0 cm	
Overall width machine	1.92 m		1.92 m	

Ground clearance

38 cm

1.81 m

wide

x **2 m** high

Agricultural tyre profiles of

30 to 40 cm

width



- **Motorisation:** engine Kubota 4 cylinders, 3.3 l, 75 cv (55.4 kW) that comply with anti-pollution norms ST3B / FT4
- **Hydrostatic transmission:** for exceptional performances
- **2 speeds:** smooth and precise thanks to the 2 speed gearbox with JSM® joystick.
- **Eco-mode:** it reduces the consumption of fuel by displacing up to 20% whilst reducing the noise by 2 dB without impacting performance
- **Hydraulic pump with gears and 90 l / 235 bar:** significant speed of movements and short handling cycle time
- **Flow sharing:** for simultaneous hydraulic movements (available with MLT 625 Elite)



MLT 629

A compact machine that is available in several versions

The MLT 629 is fitted with an engine at the back as standard and agricultural profile pneumatic tyres. The tyre tread pattern is designed for all agricultural activities. Versatility is therefore key for performing daily routines.

There are different options according to the different needs of each farm: 20" or 24" pneumatics, low cabin, high cabin or even a wide cabin. You will have the perfect machine to suit your needs.



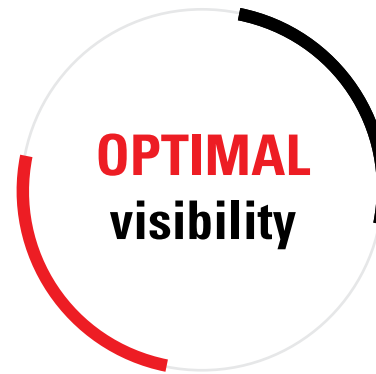
3 heights overall

Capacity **2.9t**

Agricultural tyre profile **20** and **24"**

The infographic consists of three overlapping circles. The top-left circle is white with a black border and contains the text '3 heights overall'. The top-right circle is red with a black border and contains the text 'Capacity 2.9t'. The bottom circle is white with a black border and contains the text 'Agricultural tyre profile 20 and 24"'. The numbers '20' and '24' are in red, while the rest of the text is black.

- **Motorisation:** Perkins Stage III B, 4 cylinders, 3.4 l Turbo, 102 cv (75 kW) engine located at the back of the machine for good visibility on the right-hand side of the machine
- **Weight/power ratio totally adapted:** this gives you exceptional performances which can be easily accessed including the torque converter transmission
- **Mechanical 4 speed transmission with gear change under torque, smooth and extremely precise:** regardless of the task or movement, it can reach 32 km/h (Different speeds according to the model and the legislation of the countries)
- **Hydraulic gear pump with gears and 85 l or 100 l:** considerable speed of movements and cycle time of short handling



MVT 730-929

A compact telescopic with a capacity and working height adapted to your agricultural needs.

The MVT is an ideal machine for agricultural tasks; livestock and all agricultural tasks require a compact and low machine. The hydraulic system with 2 pumps (85 and 46 l/min) and a flow sharing valve provide rapid and simultaneous movements.

You gain in terms of comfort and productivity.

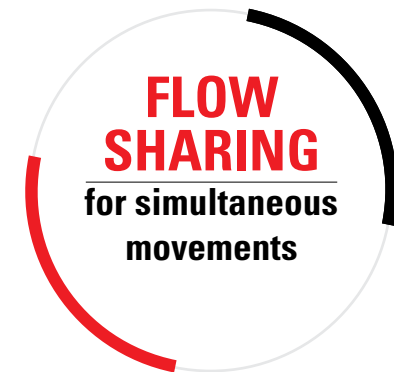


Width
2.11 m

Tyres
18 or 20"

Heights
1.94 or 2.01 m

- **Motorisation:** simple and effective and complies with the regulations regarding pollutant emissions
Deutz engine with DOC technology (diesel oxidation catalysts), without DPF (particle filter) or AD BLUE®
The ventilator and automatic inversion of the air flow always ensures an optimum cooling.
- **Brake pedal with inching function:** for smooth and safe handling
It allows you to slowly grasp your loads whilst keeping the engine at high speed. The traction of the wheels is maintained and you keep an important moving speed.
- **Varioshift:** changing continuous driving speed without interrupting the torque
The hydrostatic transmission enables light and progressive movements to manage the loads with extreme precision.
- **The approved compact machines such as agricultural tractors:**
The versatility of the MVT models is even greater. You can tow up to 24,000 kg (with brake assist on the trailer).



MLT 634-735-741-732

The MLT 634, 735, 741 and 732 all-terrain telehandlers are your key machines in your pursuit of performance.

Their capacities allow you to carry out all your agricultural handling tasks: animal feeding, harvest work, loading and unloading of bulk products...

Cattle farms for dairy/meat, cereal production or contractors will really benefit from the quality of these machines.



Visibility
360°

Lifting heights
**6.05 m or
6.9 m**

Lifting capacities
3.2 to 4.1 t



- **Motorisation** : Deutz 4 cylinders, 3.6 l turbo of 122 cv, Stage III B / Tier 4 Interim without DPF (particle filter) or AD BLUE®
- **A sturdy machine**: thanks to the design of its boom and its chassis which is one single completely welded piece
- **You choose the gearbox that suits you**: mechanic 4 speed or Powershift 6 speed
- **Variable flow pump by 150 l/min**: guarantees you a very quick speed for all hydraulic movements (as standard on the MLT 634 / 735 / 741)
- **A comfortable cabin and 360° visibility**: the ergonomic cabin facilitates precise work without any hassle
- **JSM® (Joystick Switch and Move)** to manage all hydraulic movements with just one hand

SIMPLICITY
 engine stage III B
 without DPF
 or AD BLUE®

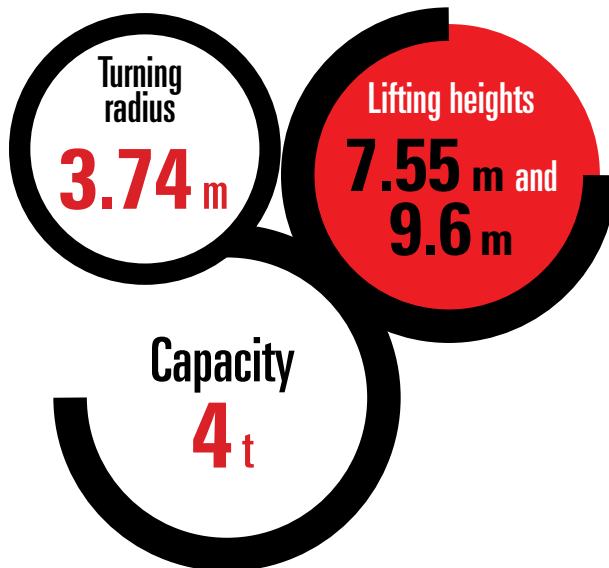


MLT 840-1040

- **Impressive maximum capacities:** to displace up to 4 t and above all discharge up to 3 t in a trailer with a height of 4.5 m
- **A sturdy boom to carry loads up to:**
 - 7.55 m (MLT 840) / double boom
 - 9.60 m (MLT 1040) / triple boom
- **A turning radius which makes no compromise:** performance goes hand in hand with agility!
- **Your machine adapts to all situations:** agricultural tyres, raised ground clearance, excellent traction effort...
- **The biggest cabin on the market:**
 - spacious and ergonomic cabin
 - easy access thanks to a large door
 - power window allowing the cabin to be ventilated naturally



Models	Engine (cv)	Transmission	Automatic	Pump	Flow/pressure
MLT 840-115 PS	115	Torque converter	M-Shift + Lock-up	Variable flow	150/290 bar
MLT 840-137 PS	137	Torque converter	M-Shift + Lock-up	Variable flow	180/290 bar
MLT 1040-137 PS	137	Torque converter	M-Shift + Lock-up	Variable flow	180/290 bar



Automatic gearbox M-Shift®: simplicity, efficacy

The MLT and 1040 have a new M-Shift® gearbox with 5 speeds enabling smooth gear changes in all situations.

Auto mode: selects the correct gear according to the speeds and automatically determines the optimum gear.

Manual mode: you decide the gear that you want to engage using the buttons + and - located on the JSM® (Joystick Switch and Move).

Lock-up: locking in direct hold of the torque converter (as standard): directly shifts the transmission of this from 23 km/h in 4th and 34 km/h in 5th. This system improves the efficiency of your machine, increases the drawbar pull and reduces fuel consumption.



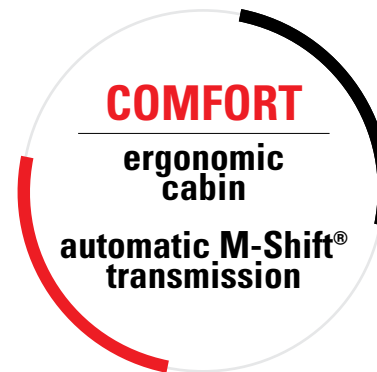
1 Selector switch (auto or manual)
2 and 3 Adjust the flow of the hydraulic line



- **Motorisation:** John Deere engine, 4 cylinders, 4 l compliant with norms Stage IIIB / Tier 4 Interim, 115 cv (MLT 840) or 137 cv (MLT 840 and 1040).
- **Effective and economic cooling system:**
 - electronic adjustment which automatically manages the rotation speed of the ventilator according to the engine's temperature
 - significant reduction in your fuel consumption
 - inversion of the automatic air flow (as standard)

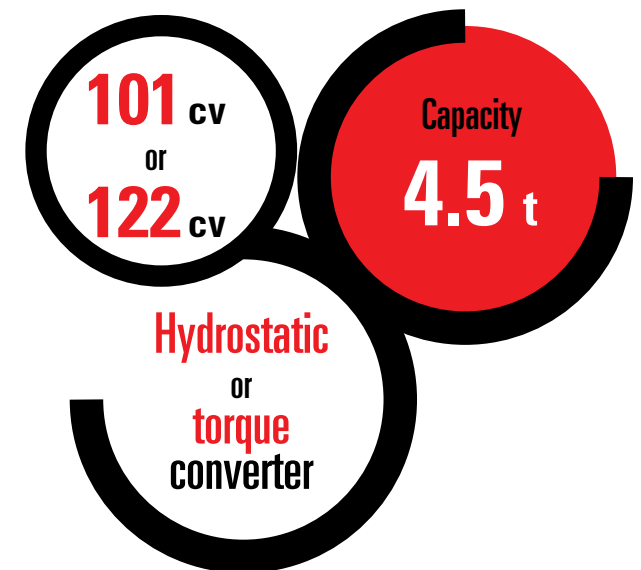
Your telescopic "breathes" perfectly in all circumstances. Regardless of the engine's rpm you will work in excellent conditions.
- **LSU system (Load Sensing Ultra):**
 - cylindrical variable pumps running up to 180 l/min for a period of movements and a more effective task
 - 2 flow regulators to adjust in the 2 directions the hydraulic speed of your attachment at the head of the boom

This allows you, for example, to quickly open and slowly close a bale grabber without having to think about it! Very useful when handling wrapping!

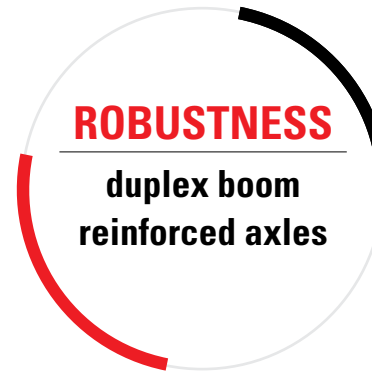


MLT 845

- **MLT 845-120 or 845-100 H, designed for intensive cycles of use:** the axles and the boom are reinforced to meet all your demands with regards strength. The cooling system has been studied to guarantee you long working days without any hassle.
- **The dimensions that are truly more compact than a classic loader:** the MLT 845 is an example of versatility (width 2.42 m, height 2.58 m). Its maximum capacity of 4.5 t and a lifting height of over 7.5 m makes your handling and loading easier.
- **Agricultural profile tyres, ground clearance (45 cm) and excellent traction effort:** you can work in all conditions and on all types of ground without any problem.
- **Comfortable cabin:** mono lever JSM® on the armrest



- **Motorisation** : Deutz 4 cylinders, 3.6 l turbo, Stage III B / Tier 4 Interim without DPF (particle filter) or AD BLUE®
- **Transmissions:**
 - hydrostatic (MLT 845-100 H) 4 speeds
 - torque converter (MLT 845-120) associated with a mechanical 4 speed gearbox
- **LSU system (Load Sensing Ultra):**
 - period of movements for a more effective task
 - hydraulic pump of 150 l/270 bar: speed and intelligent management of the flow
- **A boom in 2 parts:** for an increased cycle speed and a sturdy structure for intensive tasks



MLT 960

With a nominal capacity of 6 t and a lifting height of 9 m, the MLT 960 meets the needs of the agricultural sector, amongst others, and of industry (environment, recycling...). **This extremely powerful telehandler is your main machine in your quest for performance and profitability.**

- **A large choice of tyres**

- agricultural tyres in different widths for all tasks on all types of terrain
- semi-industrial tyres for hard earth and asphalt
- special anti-puncture tyres for 'environmental work' (recycling, waste disposal...)

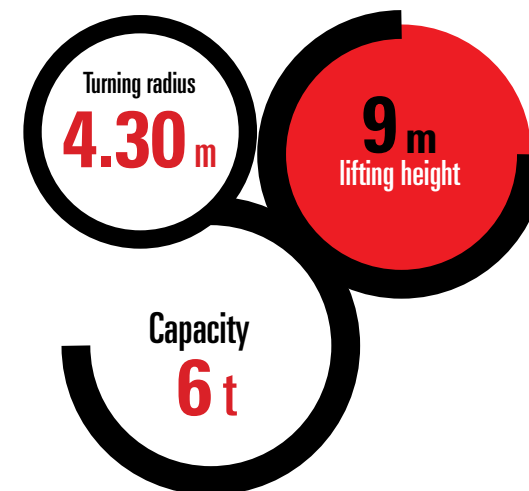
- **ACVT transmission offers greater productivity**

The new CVT transmission (Continuous Variable Transmission) Dana 318 guarantees:

- simple to use: you control your speed from 0 to 40 km/h, using only the accelerator pedal and you maintain permanent torque to the wheels
- a very important drawbar pull (10,000 daN) for your loading tasks, comfort whilst operating thanks to a smooth transmission without fuss and an important brake engine

- **Inching Function**

For smooth and secure handling, the inching pedal allows you to slowly grasp your loads whilst keeping the engine at high speed. The traction of the wheels is maintained and you keep an important moving speed.



1 CVT Transmission

Speed limiter: adjust your maximum travel speed to adapt to your needs (comfort, safety...).

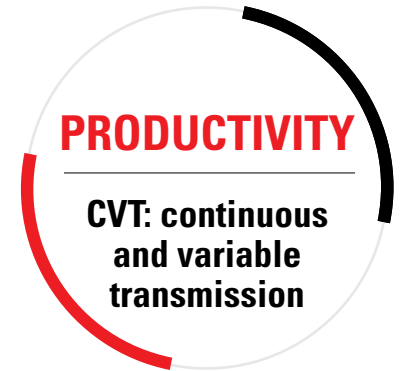
Standard modes and handling: the handling mode is very progressive and suitable for loading. The standard mode is a lot more dynamic and is recommended for all other tasks.

Working mode (SET): memorise a driving speed and an engine rpm for use with a sweeper, silage defacer...

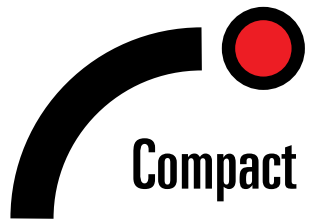
2 Hydraulic line

Controlling hydraulic lines A and B

With a flow rate of 180l/min (270 bars), the LSU (Load Sensing Ultra) hydraulic pump guarantees the combined, fast and precise movement of your boom and attachment.



- **Motorisation:** John Deere 4 cylinders engine of 4.5 l, Stage IIIB / Tier 4 Interim, 141 cv. EGR valve (Exhaust Gas Recycling) connected to a particle FILTER (DPF) to minimise the impact on the environment. With this power, the machine reaches 40 km/h whilst maintaining a controlled consumption.
- **Optimal cooling engine, reduced consumption:** Fitted with an electronic regulator, the cooling system automatically manages the rotation speed of the ventilator according to the engine's temperature. You therefore significantly reduce fuel consumption. The automatic cleaning system of the radiator inverts the air flow regardless of the engine's rpm. The cooling is always optimal and particularly in dusty environments, in the presence of straw, paper... This system minimizes maintenance and especially optimizes your engine's performance all whilst saving time and fuel.
- **Braking:** Reinforced and watertight, the front and rear axles with in oil bath integrated braking systems. As it's protected, your machine's brakes remain reliable. The steering cylinder is also protected as it is located in a raised position. You can work with demanding tasks in complete safety with the brakes being distributed to the 4 wheels and an automatic parking brake if there is a negative action. Efficiency and maximum security guaranteed!

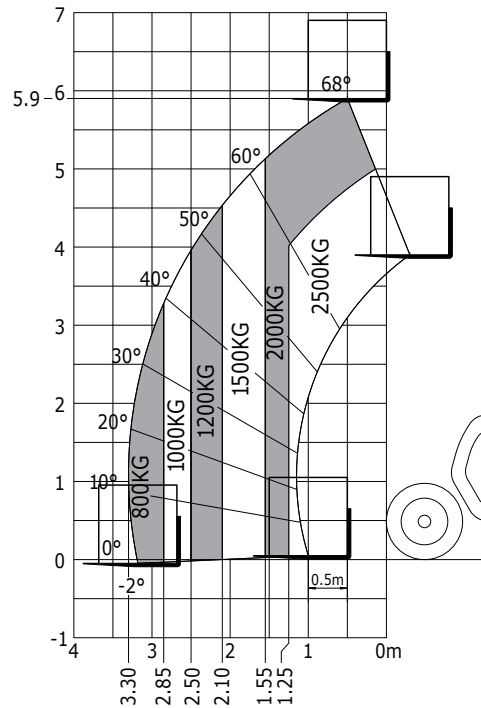


Compact



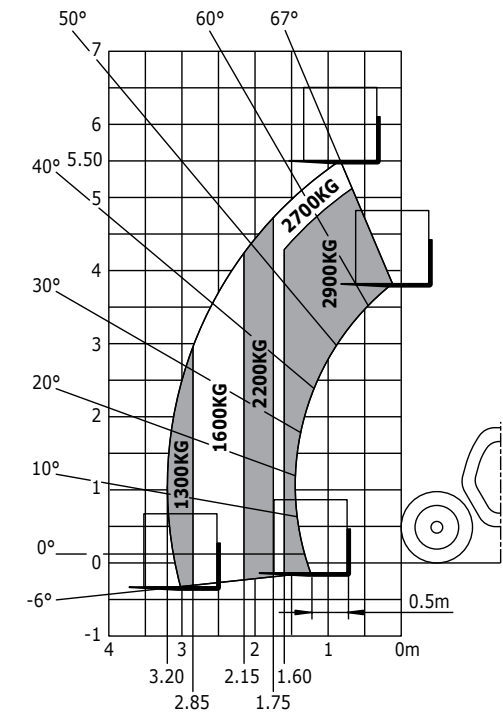
MLT 625

Transmission	-	hydrostatic
Engine power	cv- kW	75 - 55.4
Engine brand	-	KUBOTA
Max. capacity	kg	2 500
Max. lifting height	m	5.90
Max. outreach	m	3.30
Dimensions without attachments (LxWxH)	m	3.89x1.81x2.00*
Hydraulics	l/min - bar	90 - 235
Unladen weight (with forks)	kg	4 932
Max. speed	km/h	30



MLT 629

torque converter
102 - 75
PERKINS
2 900
5.5
3.2
4.83x2.00x2.21*
85 / 260
6 025
28 or 32

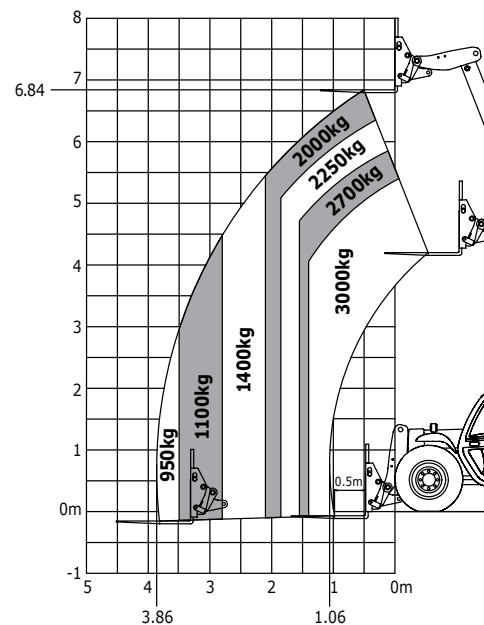


Rough terrain load chart standard EN1459 B - machines on tyres with forks
 * varies according to the cabin or tyres selected



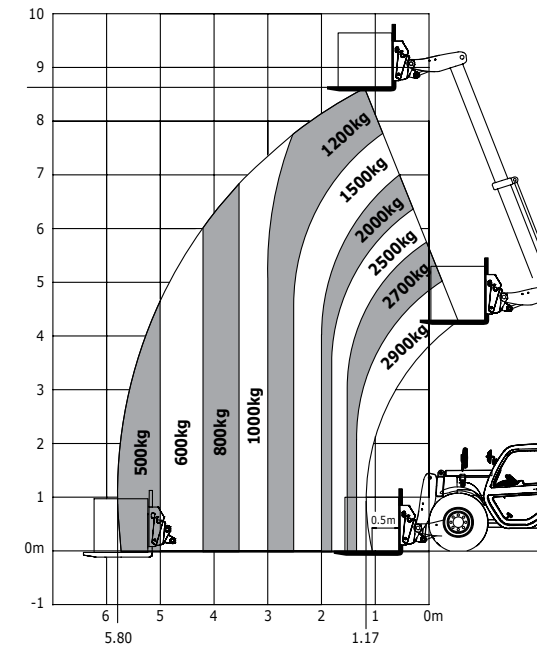
MVT 730

Transmission	-	varioshift
Engine power	cv- kW	101 - 74.4
Engine brand	-	DEUTZ
Max. capacity	kg	3 000
Max. lifting height	m	6.84
Max. outreach	m	3.86
Dimensions without attachments (LxWxH)	m	4.52x2.11x2.01*
Hydraulics	l/min - bar	85+46 - 210
Unladen weight (with forks)	kg	6 170
Max. speed	km/h	36



MVT 929

Transmission	-	varioshift
Engine power	cv- kW	101 - 74.4
Engine brand	-	DEUTZ
Max. capacity	kg	2 900
Max. lifting height	m	8.63
Max. outreach	m	5.80
Dimensions without attachments (LxWxH)	m	4.60x2.11x2.01*
Hydraulics	l/min - bar	85+46 - 210
Unladen weight (with forks)	kg	6 770
Max. speed	km/h	36



Rough terrain load chart standard EN1459 B - machines on tyres with forks
 * varies according to the tyres selected



Versatile

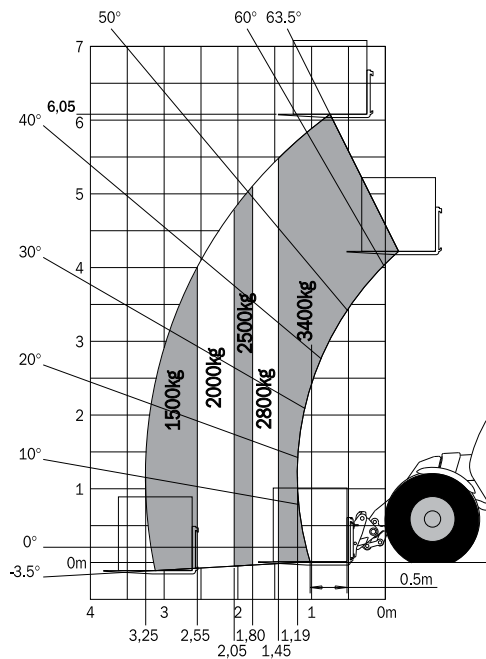


MLT 634

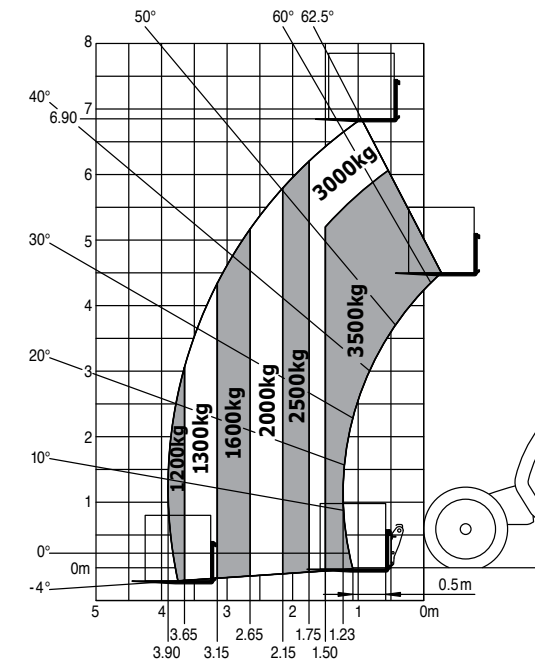


MLT 735

Transmission	-	torque converter
Engine power	cv- kW	122 - 90
Engine brand	-	DEUTZ
Max. capacity	kg	3 400
Max. lifting height	m	6.05
Max. outreach	m	3.25
Dimensions without attachments (LxWxH)	m	4.58x2.4x2.35
Hydraulics	l/min - bar	150 - 270
Unladen weight (with forks)	kg	7 340
Max. speed	km/h	40



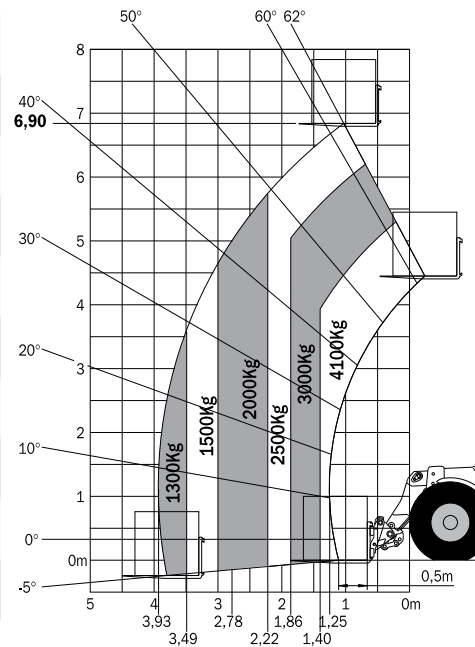
torque converter
122 - 90
DEUTZ
3 500
6.90
3.9
4.87x2.4x2.35
150 - 270
7 080
40





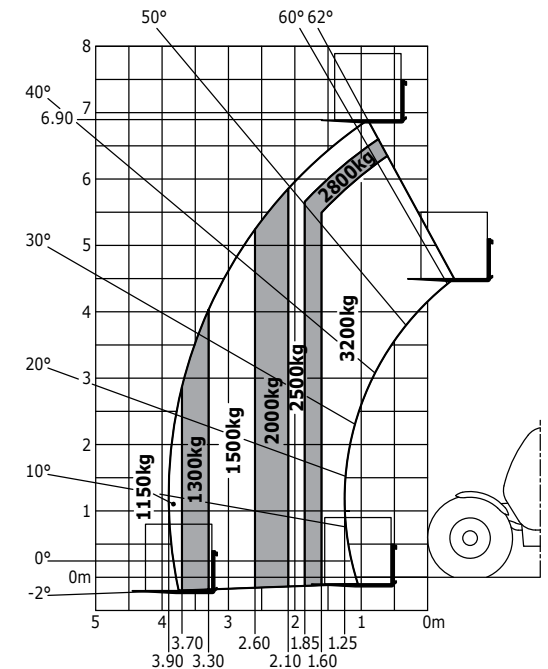
MLT 741

Transmission	-	torque converter/hydrostat.
Engine power	cv- kW	122 - 90
Engine brand	-	DEUTZ
Max. capacity	kg	4 100
Max. lifting height	m	6.90
Max. outreach	m	3.93
Dimensions without attachments (LxWxH)	m	4.92x2.4x2.35
Hydraulics	l/min - bar	150 - 270
Unladen weight (with forks)	kg	7 650
Max. speed	km/h	40



MLT 732

Transmission	-	torque converter
Engine power	cv- kW	101 - 74.4
Engine brand	-	DEUTZ
Max. capacity	kg	3 200
Max. lifting height	m	6.90
Max. outreach	m	3.94
Dimensions without attachments (LxWxH)	m	4.74x2.34x2.35
Hydraulics	l/min - bar	104 - 250
Unladen weight (with forks)	kg	6 845
Max. speed	km/h	33



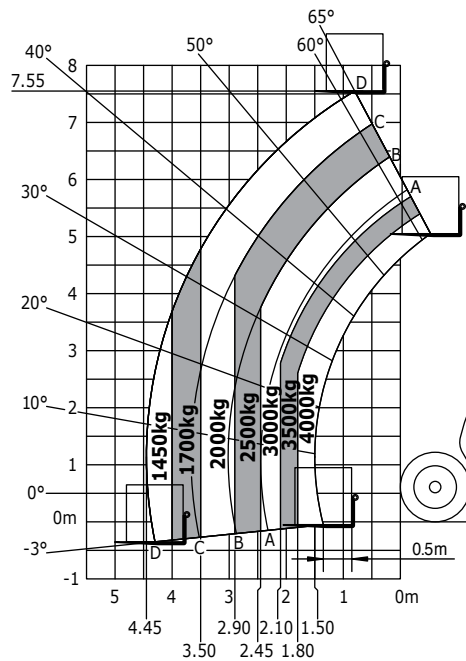


Versatile



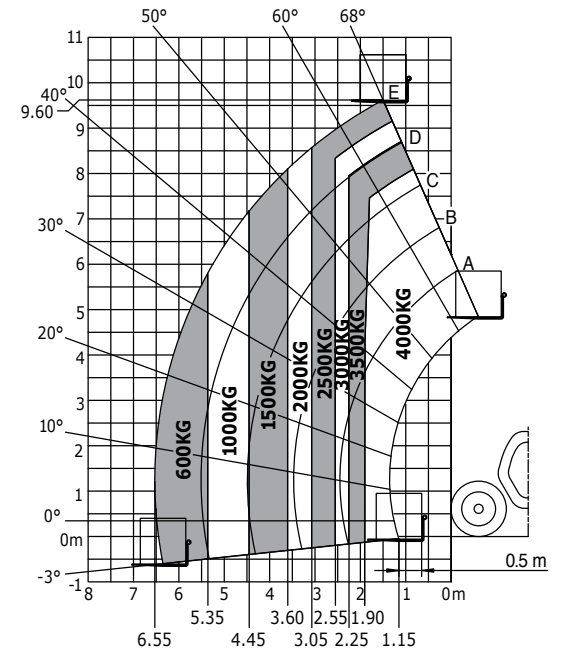
MLT 840

Transmission	-	torque converter
Engine power	cv- kW	115 - 86 / 137 - 102
Engine brand	-	JOHN DEERE
Max. capacity	kg	4 000
Max. lifting height	m	7.55
Max. outreach	m	4.45
Dimensions without attachments (LxWxH)	m	5.37x2.39x2.40
Hydraulics	l/min - bar	150 - 290 / 180 -290
Unladen weight (with forks)	kg	8 401
Max. speed	km/h	40



MLT 1040

Transmission	torque converter
Engine power	137 102
Engine brand	JOHN DEERE
Max. capacity	4 000
Max. lifting height	9.6
Max. outreach	6.55
Dimensions without attachments (LxWxH)	5.17x2.39x2.40
Hydraulics	180 - 290
Unladen weight (with forks)	9 175
Max. speed	40



High capacities

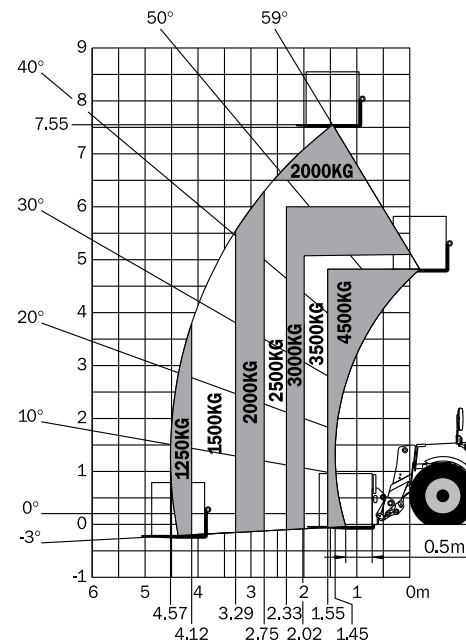


MLT 845

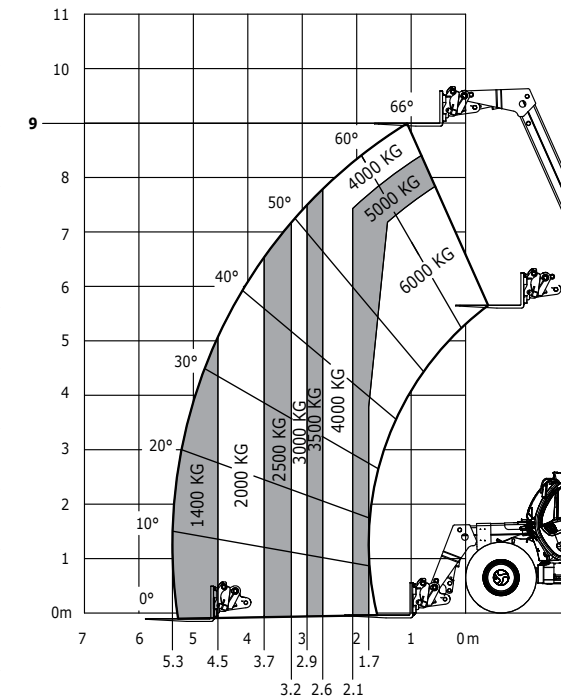


MLT 960

Transmission	-	torque converter/hydrostat.
Engine power	cv (kW)	101 - 74.4 / 122 - 90
Engine brand	-	DEUTZ
Max. capacity	kg	4 500
Max. lifting height	m	7.55
Max. outreach	m	4.57
Dimensions without attachments (LxWxH)	m	5.22x2.42x2.58
Hydraulics	l/min - bar	150 - 270
Unladen weight (with forks)	kg	9 080
Max. speed	km/h	40



CVT
141 - 104
DEUTZ
6 000
9
5.3
5.22x2.46x2.58
180 - 270
11 400
40



Rough terrain load chart standard EN1459 B - machines on tyres with forks

Selection of options

The ECS (Easy Connect System)

The ECS decompresses the attachment line without turning off the engine, making it quick and easy to change your hydraulic accessories. This saves you time, and makes changing attachments less arduous.



Suspension and comfort

The boom suspension softens movements: the boom components are protected and your comfort is improved.

Air-conditioning offers driving comfort in all weather conditions.

The low frequency, heated pneumatic seat provides greater comfort for the operator as the vibrations are better absorbed.



Tyres

Manitou offers several kinds of tyres depending on the purpose of your machine, your terrain and any specific needs you may have.



Hydraulic locking of the attachment

The hydraulic locking of the carriage allows you to change and lock on/off the attachment without leaving the machine.



Standard and optional equipment

Our standard machine meets numerous requirements:

General:

- Deck + forks
- Boom material deflectors
- Central lubrication point
- External rear-view mirrors left and right
- Rear-view mirror
- Emergency stop button
- Wheel alignment indicator front and back
- Aggravating movements cut-off (EN 15 000)

Cabin:

- Closed cabin with heating
- Sun visor on wind shield and roof light
- Height and depth adjustable steering wheel
- Windscreen wiper front and rear with windscreen washer
- Roof windscreen wiper (except MLT 732)
- Ceiling light

Electricity / Security:

- Complete road lighting + rotating beacon
- Front and rear work lamp
- Reverse light
- Fog light
- Rear electric socket
- Battery disconnect

Hydraulics:

- JSM®, Joystick Switch & Move
- Hydraulic line head of boom with fast couplers





Manitou is here to help!

In order to benefit from an operational telehandler all year long, Manitou offers a wide range of products and services that are suited to all your needs.



Expertise and service on a daily basis

Your Manitou dealer guarantees a complete range of services at all stages of your machine's life. The dealer will support you and adapt to your needs in order to provide the best solution.

1,400 dealers at your service

The Manitou network operates in more than 140 countries. In total, there are more than 2,000 expert technicians, specially trained in Manitou technology, who are at your service to assist with everything from purchasing to after-sales.

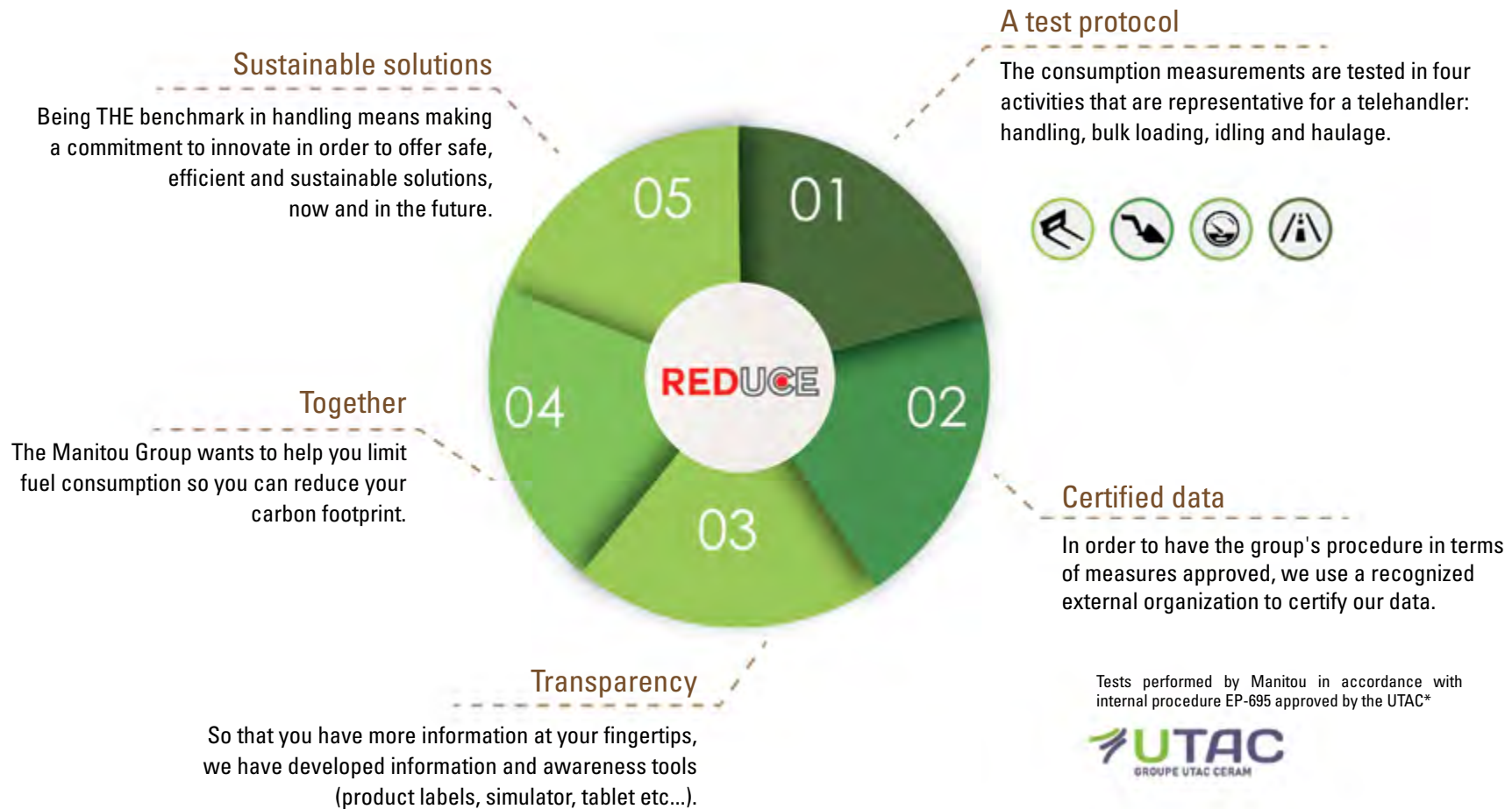


- Dealership network**
A network of experts at your service, whatever your activity (agriculture, construction, industry).
- Maintenance contracts**
3 levels of contract that are tailored to your needs: Initial, Advanced, and Excellence. Entrust the maintenance of your equipment to your dealer.
- Financing**
Lease or buy? Manitou Finance helps you choose the most suitable financing solution for your activity. Why look elsewhere?
- Warranty extension**
With Maniplus, you can extend the cover of your Manitou for up to 5 years. Use your equipment with peace of mind.
- Connected solution**
Easy Manager is a simple and flexible tool for managing, optimizing and securing the operational monitoring of your machines.
- Second-hand**
In the market for second-hand equipment? The Manitou network is here to help you. Visit manitou.used.com, our dedicated reference site for second-hand Manitou machines.
- Original spare parts**
With more than 70,000 products available, your Manitou dealer provides expertise and service on a daily basis!

The REDUCE Program

The handling sector does not yet have a standardized cycle for measuring the fuel consumption of machines. However, the Manitou Group has established an internal protocol which is accessible to everyone and shows Manitou's own consumption measurements (l/h) and CO2 emissions (kg/h).

In order to make procedures more reliable, this data is controlled and approved by an independent organization, the UTAC*, which specializes in approving of vehicles and equipment.



Guiding you

The Manitou Group wants to help you save fuel and reduce the carbon footprint of your machines with these 23 easy-to-follow tips. See more advice at reduce.manitou.com.



Choose the right level of power for your needs.



Switch off your engine after three minutes sat idling.



The best engine performance occurs with maximum torque



Choose controllable and reversible fan systems.



Use 'smart' automated transmissions.



Close doors and windows when using air-conditioning.



Choose LED headlights.



Use the right tyres for your environment.



Ensure you have the right tire pressure.



Check that the parking brake is set.



Adjust your maximum trailing load.



Adapt your attachments to your machine.



Observe the maintenance intervals.



Ensure regular lubrication.



Make sure you know your machine's fuel consumption and emissions.

Your dealer:



Head office

B.P. 10249 - 430 rue de l'Aubinière - 44158 Ancenis Cedex - France

Tel.: 00 33 (0)2 40 09 10 11 - Fax: 00 33 (0)2 40 09 10 97

